

PROJECT: The Terrace, Austin
ARCHITECTS: Milosav Cekic, AIA;
 Richard Fitzgerald & Partners; ARC
 Incorporated (all of Austin)

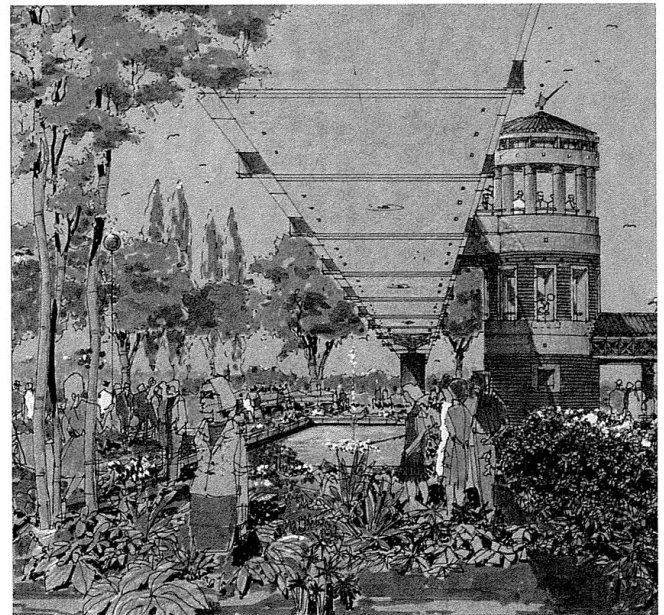
A development of the W&G Partnership, The Terrace is a 1.37-million-square-foot mixed-use project planned for a flat bluff overlooking Barton Creek in southwest Austin. The project includes offices, a conference center, a 300-room hotel, retail space, a restaurant, and 272 residential units.

Hoping to avoid opposition from neighbors and environmentalists. The planners of The Terrace have stressed that the project has been sited and designed to minimize environmental impact and to be all-but invisible from surrounding neighborhoods. But the designers have been far from timid in their approach to the architectural expression of the project: The Terrace leapfrogs the post-modernism of other retail developments and goes for a full-blown evocation of a dense, layered Mediterranean hill town. ■■■■■

—Joel Warren Barna

Texas Architect January/February 1988

ABOVE: The Terrace is sited to minimize environmental impact, but retains a strong character.



The Terrace features dense clusters of residential, retail, and office buildings in a Mediterranean style.

Texas Architect January/February 1988