



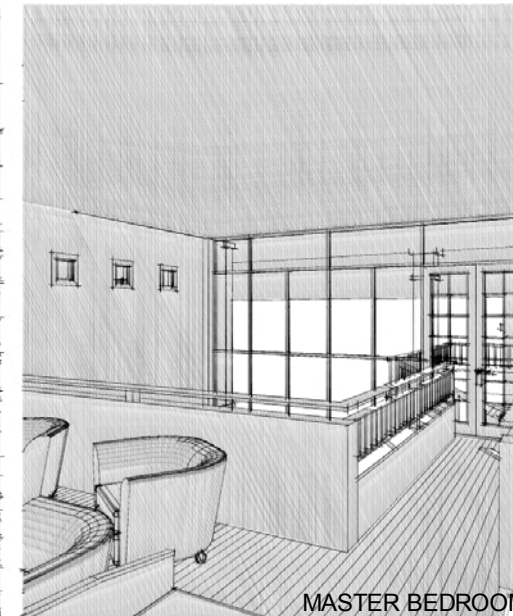
LAGOON SIDE ELEVATION



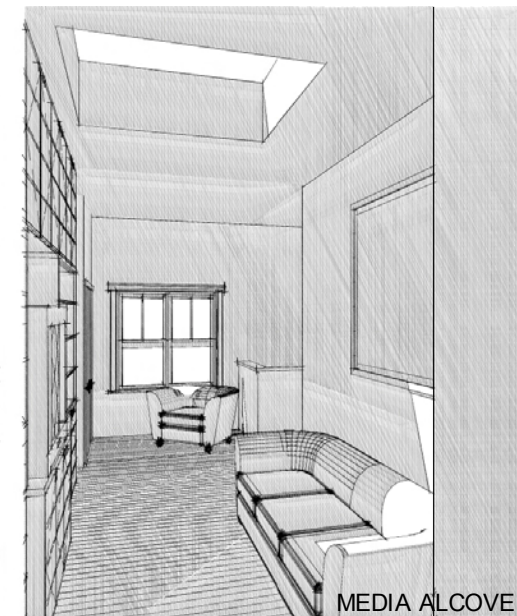
FRONT-STREET ELEVATION



LIVING ROOM



MASTER BEDROOM



MEDIA ALCOVE



GAME ROOM



EXTERIOR BALCONIES



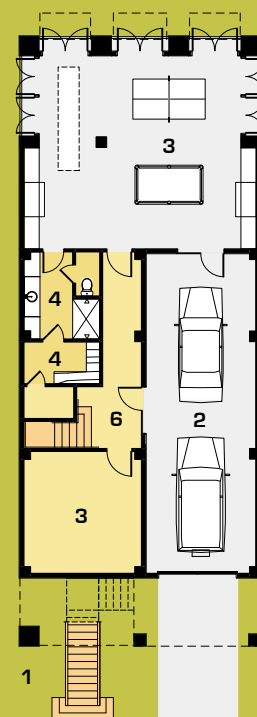
KITCHEN AND DINING

## LEGEND

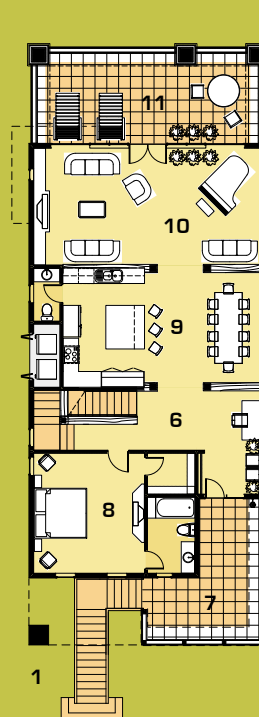
- 1..... ENTRY STAIRS
- 2..... GARAGE
- 3..... STORAGE
- 4..... BATHROOM & SAUNA
- 5..... GAME ROOM
- 6..... STAIRS
- 7..... ENTRY PORCH
- 8..... GUEST ROOM
- 9..... KITCHEN & DINING
- 10..... LIVING ROOM
- 11..... LAGOON SIDE PORCH
- 12..... BEDROOM
- 13..... MEDIA ALCOVE
- 14..... MASTER SUITE
- 15..... MASTER BATH
- 16..... PRIVATE BALCONY

## SQUARE FOOTAGE

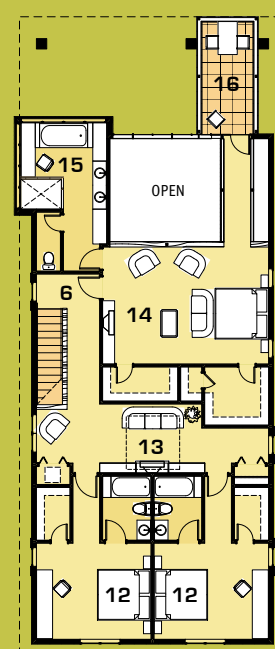
- 4 BEDROOMS + 4 BATHS
- TOTAL OF ..... 3975 SF
- PORCHES ..... 700 SF



GROUND FLOOR



SECOND FLOOR



THIRD FLOOR

# The Lagoon House

BEACHTOWN • GALVESTON, TEXAS

Located on one of the Beachtown lagoons, this house design is inspired by the rich tradition of Galveston residential architecture while at the same time using modern technology, products, and materials to create more open views, more dynamic spaces, interesting spatial sequence, and unique and distinctly different experiences in different parts of the house. Both inside and outside, the house is mostly about views – large windows, two-story living room space, and a transparent design of the main floor. It is also about creating a special quality to every space, primarily through a thoughtful infusion of light, careful design of circulation routes, and positioning of the windows. A major design gesture is made to the street with a front porch wrapping one corner, a large pillar at the other corner, and the stairs going to the living room level. On the lagoon side a narrow and long third level balcony provides dramatic views of the lagoons and beyond.

There is an emphasis on the activity on the ground level and the use of shaded ground level space for table tennis, pool table, or shuffle board on the inside, and sitting, BBQ-ing, or sun bathing on the outside. The house is intended to be a place rather than an object. It is designed in what might be called a "classical vernacular" idiom with some intentional digressions for a more dynamic and yet balanced composition. Subdued and dignified, it exhibits sufficient amount of intricate detailing to create visual richness. The material shown is white (light) stucco, but this same design can easily be modified to work with other materials.

**MC/A Architects, Inc.** • Architecture & Urban Design  
2413 Elmglen Drive • Austin, Texas 78704 • (512) 326-8300

© 2006 MC/A Architects Inc., graphic design by Pablo Serna



[ A SIMPLE LIFE BY THE SEA ]

